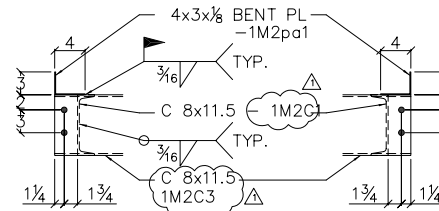
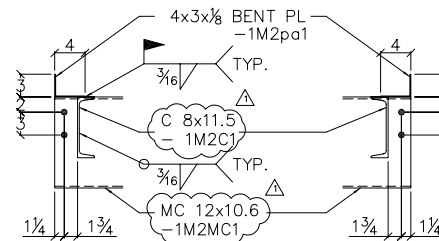


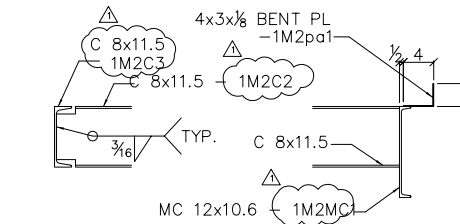
3 - LANDINGS - 1L1M2



SECTION "A-A"

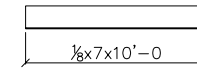


SECTION "B-B"



SECTION - C

SECTION - D



SIX - BENT PLATE - 1M2pa1
(CUT TO FIT LENGTH)

REV	DATE	DESCRIPTION
△	09/27/2001	PIECE MARK ADDED BY AYU
SHOP NOTE: COPE RE-ENTRANT CORNERS TO MIN. 1/2" R.		
SHOP CONN. U.N.O.	JOB: CAPITAL COMMERCE CENTER LOCATION: EAST 3rd & COMMERCE LITTLE ROCK, ARKANSAS DWG TITLE: ARCH./ENG: AMR ARCHITECTS INC. CONTRACTOR: EAST HARDING JOB NO. 01-158	
SHOP PAINT:	OPEN HLS: AS NOTED	DRAWN / DATE: TRQ / 08/23 CK'D / DATE: AYU / 08/23 DWG NO: 1M2