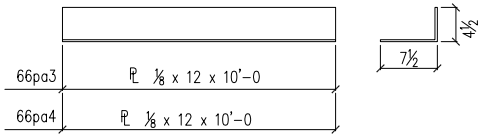


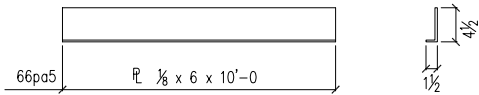
66pa1 L 1/4 x 8 1/2 x 10'-0
 66pa2 L 1/4 x 8 1/2 x 10'-0
 23 - BENT PLATES - 66pa1
 (CUT TO FIT LENGTH)
 (ON GRID - "A" & "D" BETWEEN "1" - "8" @ 2ND FL)
 (REF: 01/E8, 02/E8)

15 - BENT PLATES - 66pa2
 (CUT TO FIT LENGTH)
 (ON GRID - "1" & "8" BETWEEN "A" - "D" @ 2ND FL)
 (REF: 05/E8,)

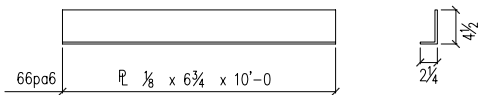


66pa3 L 1/8 x 12 x 10'-0
 66pa4 L 1/8 x 12 x 10'-0
 74 - BENT PLATES - 66pa3
 (CUT TO FIT LENGTH) (NOTCH AROUND COLUMN)
 (ON GRID - "1" & "8" BETWEEN "A" - "D" - @ 3RD, 4TH, 5TH, 6TH FL.)
 (REF: 06/E10, 02/E9, 07/E8)

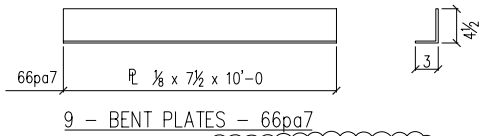
114 - BENT PLATES - 66pa4
 (CUT TO FIT LENGTH) (NOTCH AROUND COLUMN)
 (ON GRID - "A" & "D" BETWEEN "1" - "8" - @ 3RD, 4TH, 5TH, 6TH FL.)
 (REF: 01/E12, 05/E10, 02/E9)



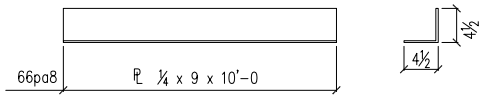
66pa5 L 1/8 x 6 x 10'-0
 20 - BENT PLATES - 66pa5
 (CUT TO FIT LENGTH) (@ 2ND, 3RD, 4TH, 5TH, 6TH, 7TH FL.)
 (REF: 01/E11, 07/E12)



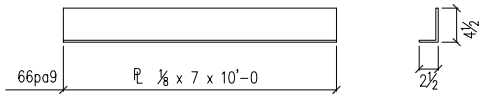
66pa6 L 1/8 x 6 3/4 x 10'-0
 30 - BENT PLATES - 66pa6
 (CUT TO FIT LENGTH) (@ 2ND, 3RD, 4TH, 5TH, 6TH, 7TH FL.)
 (REF: 02/E11, 03/E11,)



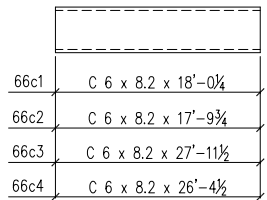
66pa7 L 1/8 x 7 1/2 x 10'-0
 9 - BENT PLATES - 66pa7
 (CUT TO FIT LENGTH) (@ 2ND, 3RD, 4TH, 5TH, 6TH, 7TH FL.)
 (REF: 04/E11)



66pa8 L 1/4 x 9 x 10'-0
 12 - BENT PLATES - 66pa8
 (CUT TO FIT LENGTH) (@ 2ND, 3RD, 4TH, 5TH, 6TH, 7TH FL.)
 (REF: 03/E10, 03/E11)



66pa9 L 1/8 x 7 x 10'-0
 33 - BENT PLATES - 66pa9
 (CUT TO FIT LENGTH) (@ 4TH, 5TH, 6TH FL.)
 (REF: 02/E12, 03/E12, 04/E12)



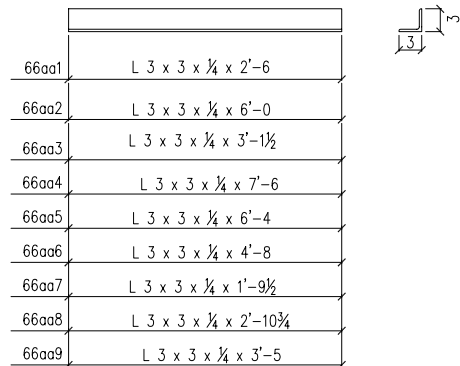
66c1 C 6 x 8.2 x 18'-0 1/4
 66c2 C 6 x 8.2 x 17'-9 3/4
 66c3 C 6 x 8.2 x 27'-11 1/2
 66c4 C 6 x 8.2 x 26'-4 1/2

20 - CHANNEL - 66c1
 (ON GRID "A" & "D" BETWEEN 2-3, 3-4, 4-5, 5-6, 6-7 @ 2ND FL.)
 (REF: 01/E8, 02/E8)

8 - CHANNEL - 66c2
 (ON GRID "A" & "D" BETWEEN 1-2, 7-8 @ 2ND FL.)
 (REF: 01/E8, 02/E8)

4 - CHANNEL - 66c3
 (ON GRID "1" & "8" BETWEEN B-C @ 2ND FL.)
 (REF: 05/E8)

8 - CHANNEL - 66c4
 (ON GRID "1" & "8" BETWEEN A-B, C-D @ 2ND FL.)
 (REF: 05/E8)



66aa1 L 3 x 3 x 1/4 x 2'-6
 66aa2 L 3 x 3 x 1/4 x 6'-0
 66aa3 L 3 x 3 x 1/4 x 3'-1 1/2
 66aa4 L 3 x 3 x 1/4 x 7'-6
 66aa5 L 3 x 3 x 1/4 x 6'-4
 66aa6 L 3 x 3 x 1/4 x 4'-8
 66aa7 L 3 x 3 x 1/4 x 1'-9 1/2
 66aa8 L 3 x 3 x 1/4 x 2'-10 3/4
 66aa9 L 3 x 3 x 1/4 x 3'-5

28 - ANGLE BRACE - 66aa1
 (REF: 01/E8, 02/E8 @ 2ND FL.)
 166 - ANGLE BRACE - 66aa2
 (REF: 05/E8, 07/E8, 06/E10 @ 2ND, 3RD, 4TH, 5TH, 6TH FL.)
 112 - ANGLE BRACE - 66aa3
 (REF: 05/E10, 01/E12 @ 3RD, 4TH FL.)
 124 - ANGLE BRACE - 66aa4
 (REF: 07/E8, 06/E10, 03/E16 @ 3RD, 4TH, 5TH, 6TH, 7TH FL.)
 132 - ANGLE BRACE - 66aa5
 (REF: 05/E11, 07/E8 @ 4TH, 5TH, 6TH FL BALCONY.)
 132 - ANGLE BRACE - 66aa6
 (REF: 05/E11, 07/E8 @ 4TH, 5TH, 6TH FL BALCONY.)
 24 - ANGLE BRACE - 66aa7
 (REF: 01/E12 @ 4TH, 5TH, 6TH DROP GIRDER.)
 12 - ANGLE BRACE - 66aa8
 (REF: 06/E11 @ 4TH, 5TH, 6TH FL BALCONY.)
 80 - ANGLE BRACE - 66aa9
 (REF: 04/E12 @ 4TH, 5TH, 6TH FL.)

SHOP BILL

QTY.	SECTION DESCRIPTION	LENGTH		MARK	REMARKS
		FEET	INCHES		
23	L 1/4 x 8 1/2	10	0	66pa1	BENT
15	L 1/4 x 8 1/2	10	0	66pa2	BENT
74	L 1/8 x 12	10	0	66pa3	BENT
114	L 1/8 x 12	10	0	66pa4	BENT
20	L 1/8 x 6	10	0	66pa5	BENT
30	L 1/8 x 6 3/4	10	0	66pa6	BENT
9	L 1/8 x 7 1/2	10	0	66pa7	BENT
12	L 1/4 x 9	10	0	66pa8	BENT
33	L 1/8 x 7	10	0	66pa9	BENT
20	C 6 x 8.2	18	0 1/4	66c1	
8	C 6 x 8.2	17	9 3/4??	66c2	
4	C 6 x 8.2	27	11 1/2	66c3	
8	C 6 x 8.2	26	4 1/2??	66c4	
28	L 3 x 3 x 1/4	2	6	66aa1	
166	L 3 x 3 x 1/4	6	0	66aa2	
112	L 3 x 3 x 1/4	3	1 1/2	66aa3	
124	L 3 x 3 x 1/4	7	6	66aa4	
132	L 3 x 3 x 1/4	6	4	66aa5	
132	L 3 x 3 x 1/4	4	8	66aa6	
24	L 3 x 3 x 1/4	1	9 1/2	66aa7	
12	L 3 x 3 x 1/4	2	10 3/4	66aa8	
80	L 3 x 3 x 1/4	3	5	66aa9	

REV	DATE	DESCRIPTION
Δ	09/20/01	

SHOP NOTE: COPE RE-ENTRANT CORNERS TO MIN. 1/2" R.

SHOP CORR. U.N.O.

JOB: CAPITAL COMMERCE CENTER
 LOCATION: EAST 3rd & COMMERCE LITTLE ROCK, ARKANSAS
 DWG TITLE:
 ARCH./ENG: AMR ARCHITECTS INC.
 CONTRACTOR: EAST HARDING
 JOB NO. 01-158

SHOP CLEAN:	OPEN HLS:	DRAWN / DATE:	CK'D / DATE:	DWG NO:
	3/4" UN	NHS / 08/23	AYU / 08/23	66