

50'-0"

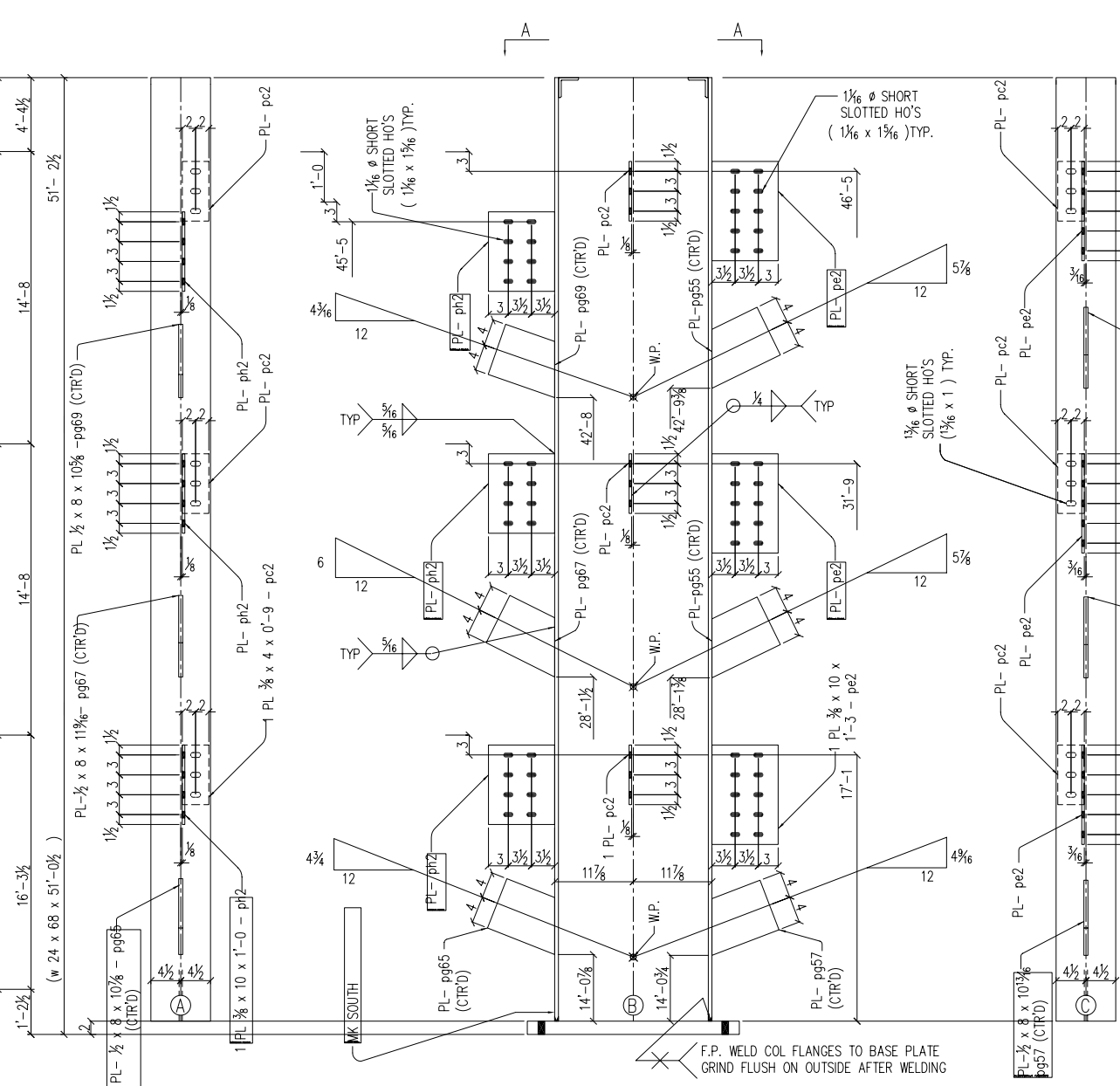
EL = + 45'-7 1/2" EL = +

EL = + 30'-11 1/2"

EL = + 16'-3 1/2"

FIN. FL. = + 0'-0"

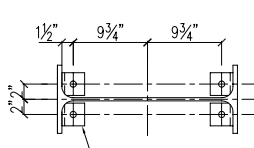
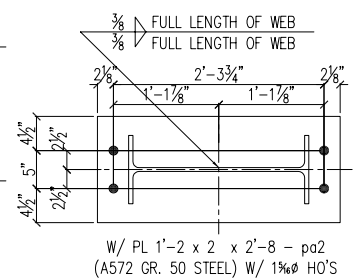
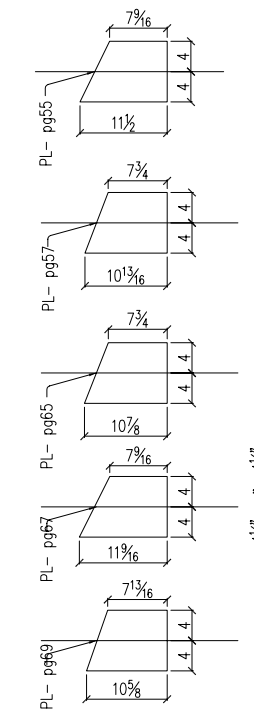
1'-2 1/2"



NOTE:-  
 \*1. A572 GRADE 50 STEEL  
 \*2. ROLLED OR FLAME CUT EDGE

# SHOP BILL

QTY.	SECTION DESCRIPTION	LENGTH		MARK	REMARKS
		FEET	INCHES		
ONE	COLUMN			6C1 <sup>L</sup>	
1	W 24 x 68	51	0 1/2		
4	L3 x 3 x 3/8	3		1A1	
1	PL 2 x 1'-2"	2	8	pa2	*1
3	PL 3/8 x 4	0	9	pc2	
3	PL 3/8 x 10	1	0	ph2	*1, *2
3	PL 3/8 x 10	1	3	pe2	*1, *2
2	PL 1/2 x 8	0	11 1/2	pg55	*1
1	PL 1/2 x 8	0	10 1 3/16	pg57	*1
1	PL 1/2 x 8	0	10 7/8	pg65	*1
1	PL 1/2 x 8	0	11 3/16	pg67	*1
1	PL 1/2 x 8	0	10 5/8	pg69	*1



1A1-L3 x 3 x 3/8 x 3\" LG.  
 W/ 13/16\" DIA. HOLE G.O.S.L. 1 1/2\"  
 CLIP CORNER OF ANGLE AS REQ.  
 1 - COLUMN - 6C1<sup>L</sup> (AS SHOWN)  
 GRID ( A - 7 )  
 ( 54 - 1 Ø x 2 1/4 )  
 ( 9 - 3/4 Ø x 2 )  
 ( 4 - 3/4 Ø x 2 )

REV	DATE	DESCRIPTION
A	08/06/01	ADDED CLIP L AT SPLICE

SHOP NOTE: COPE RE-ENTRANT CORNERS TO MIN. 1/2\" R.

SHOP CORR. U.N.O.

SHOP PAINT:

SHOP CLEAN: OPEN HLS: AS NOTED

DRAWN / DATE: NHS / 08/02

CK'D / DATE: AYU / 08/10

DWG NO: 6

JOB: CAPITAL COMMERCE CENTER  
 LOCATION: EAST 3rd & COMMERCE LITTLE ROCK, ARKANSAS  
 DWG TITLE:  
 ARCH./ENG: AMR ARCHITECTS INC.  
 CONTRACTOR: EAST HARDING  
 JOB NO. 01-158

F.P. WELD COL FLANGES TO BASE PLATE  
 GRIND FLUSH ON OUTSIDE AFTER WELDING