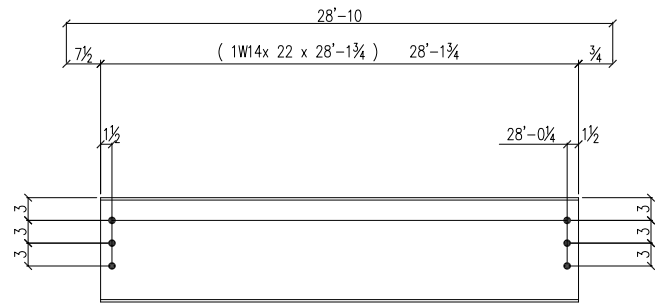
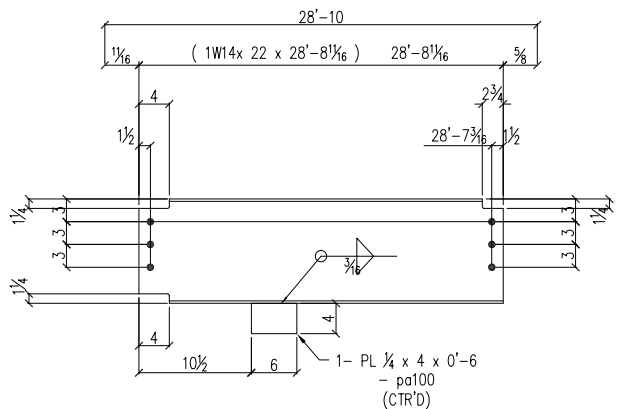


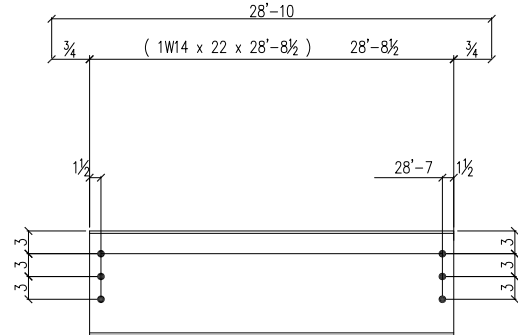
2 - BEAMS - 31B1



2 - BEAMS - 31B2^R (AS SHOWN)
3 - BEAMS - 31B2^L (OPP. HAND)



10 - BEAMS - 31B3



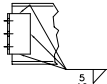
20 - BEAMS - 31B4*

SHOP BILL

QTY.	SECTION DESCRIPTION	LENGTH		MARK	REMARKS
		FEET	INCHES		
TWO	BEAM			31B1	
2	W 14 x 22	28	8 3/4		
2	PL 1/4 x 4	0	6	pa100	
TWO	BEAM			31B2 ^R	
2	W 14 x 22	28	1 3/4		
THREE	BEAM			31B2 ^L	
3	W 14 x 22	28	1 3/4		
TEN	BEAM			31B3*	
10	W 14 x 22	28	8 1/16		
10	PL 1/4 x 4	0	6	pa100	
TWENTY	BEAM			31B4*	
20	W 14 x 22	28	8 1/2		

REV	DATE	DESCRIPTION

SHOP NOTE: COPE RE-ENTRANT CORNERS TO MIN. 1/2" R.

SHOP CORR. U.N.O. 

JOB: CAPITAL COMMERCE CENTER
 LOCATION: EAST 3rd & COMMERCE LITTLE ROCK, ARKANSAS
 DWG TITLE: _____
 ARCH./ENG: AMR ARCHITECTS INC.
 CONTRACTOR: EAST HARDING
 JOB NO: _____

SHOP CLEAN: _____	OPEN HLS: 1/16" UN	DRAWN / DATE: NHS / 08/07	CK'D / DATE: AYU / 08/07	DWG NO: 31
-------------------	--------------------	---------------------------	--------------------------	------------