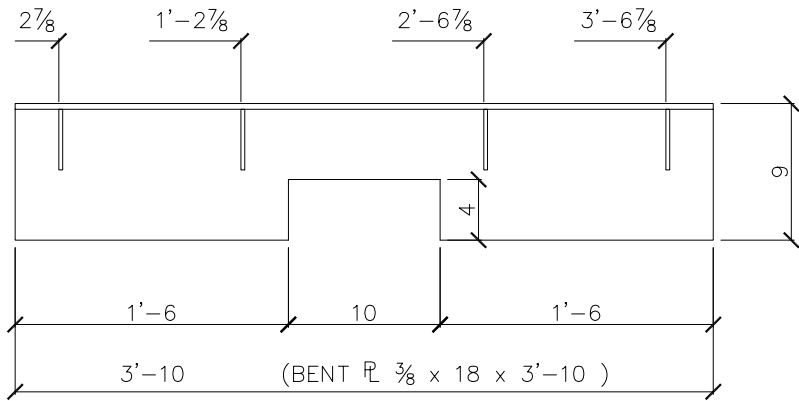


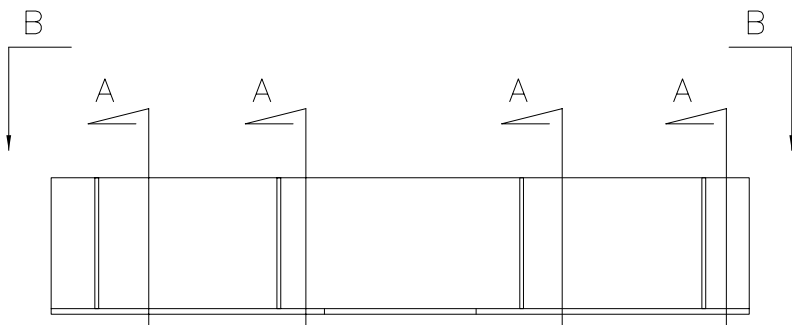
SHOP BILL

QTY.	SECTION DESCRIPTION	LENGTH		MARK	REMARKS
		FEET	INCHES		
EIGHTY EIGHT	PLATE			64pa1	
88	PL $\frac{3}{8}$ x 18	3	10		BENT
352	PL $\frac{1}{4}$ x 5 $\frac{5}{8}$	0	8 $\frac{5}{8}$	pa31	

NOTE:
THIS ITEM IS TO BE
HOT DIP GALVANIZED

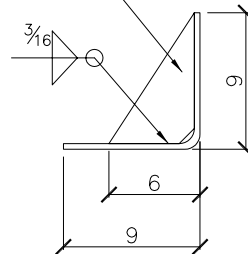


SECT-"B - B"



88 - BENT PLATES - 64pa1

PL $\frac{1}{4}$ x 5 $\frac{5}{8}$ x 0'-8 $\frac{5}{8}$ - pa31
(CLIP ONE CORNER 1 X 1)
(1 MAKES 2)



SECT-"A"

	REV	DATE	DESCRIPTION
SHOP NOTE: COPE RE-ENTRANT CORNERS TO MIN. 1/2" R.			
SHOP CONN. U.N.O	JOB: CAPITAL COMMERCE CENTER LOCATION: EAST 3rd & COMMERCE LITTLE ROCK, ARKANSAS DWG TITLE: _____ ARCH./ENG: AMR ARCHITECTS INC. CONTRACTOR: EAST HARDING JOB NO. 01 - 158		
SHOP PAINT: _____			
SHOP CLEAN: _____	OPEN HLS: 1 $\frac{3}{16}$ " \emptyset UN	DRAWN / DATE NHS / 08/12	CK'D / DATE AYU / 08/12
			DWG NO: 64pa1