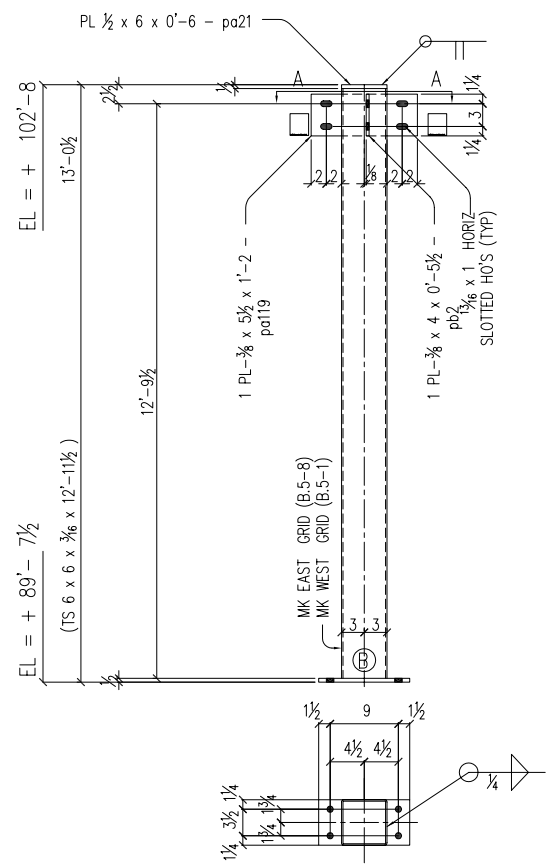
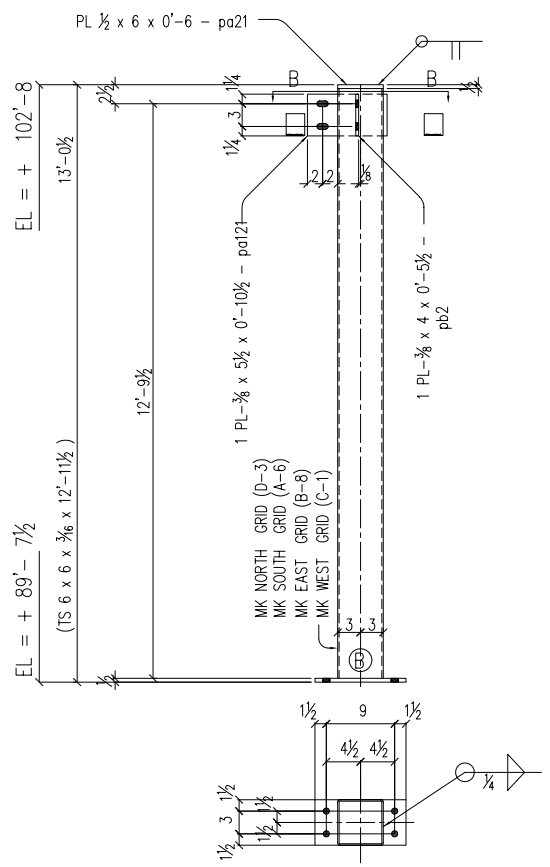


SHOP BILL

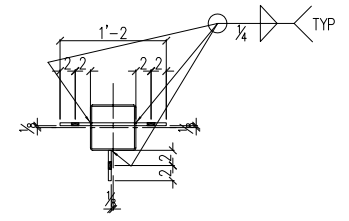
QTY.	SECTION DESCRIPTION	LENGTH		MARK	REMARKS
		FEET	INCHES		
TWO	COLUMN			114C1	
2	TS 6 x 6 x $\frac{3}{16}$	12	11 $\frac{1}{2}$		
2	PL $\frac{1}{2}$ x 6	1	0	pa233	
2	PL $\frac{3}{8}$ x 4	0	5 $\frac{1}{2}$	pb2	
2	PL $\frac{3}{8}$ x 5 $\frac{1}{2}$	1	2	pa119	
2	PL $\frac{1}{2}$ x 6	0	6	pa21	
FOUR	COLUMN			114C2	
4	TS 6 x 6 x $\frac{3}{16}$	12	11 $\frac{1}{2}$		
4	PL $\frac{1}{2}$ x 6	1	0	pa232	
4	PL $\frac{3}{8}$ x 4	0	5 $\frac{1}{2}$	pb2	
4	PL $\frac{3}{8}$ x 5 $\frac{1}{2}$	0	10 $\frac{1}{2}$	pa121	
4	PL $\frac{1}{2}$ x 6	0	6	pa21	



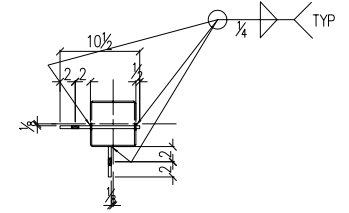
2 - COLUMNS - 114C1
 GRID (B.5 - 1)
 GRID (B.5 - 8)
 (20 - $\frac{3}{4}$ phi x 2)



4 - COLUMNS - 114C2
 GRID (C - 1)
 GRID (B - 8)
 GRID (A - 6)
 GRID (D - 3)
 (16 - $\frac{3}{4}$ phi x 2)



SECT: - "A-A"



SECT: - "B-B"

REV	DATE	DESCRIPTION
SHOP NOTE: COPE RE-ENTRANT CORNERS TO MIN. 1/2" R.		
SHOP CONN. U.N.O.	JOB: CAPITAL COMMERCE CENTER LOCATION: EAST 3rd & COMMERCE LITTLE ROCK, ARKANSAS	
	DWG TITLE: _____ ARCH./ENG: AMR ARCHITECTS INC. CONTRACTOR: EAST HARDING JOB NO. 01-158	
SHOP PAINT: _____	SHOP CLEAN: _____	OPEN HLS: AS NOTED
DRAWN / DATE MNO / 09 / 15	CK'D / DATE AYU / 09 / 17	DWG NO. 114