

WALL ELEVATION  
L=TYP. LAP SPLICE, X=24"

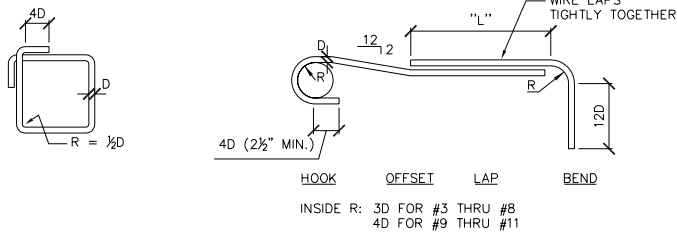
- NOTES:
1. STAGGER TYPICAL LAP SPLICES AS SHOWN FOR ALL WALLS AT LIQUID CONTAINING STRUCTURES.
  2. MINIMUM STAGGER BETWEEN SPLICES OF OUTER AND INNER CURTAINS OF HOR. REINFORCING SHALL BE 2L (L= SPLICE LENGTH).

REINFORCING LAP SPLICE 1  
S3

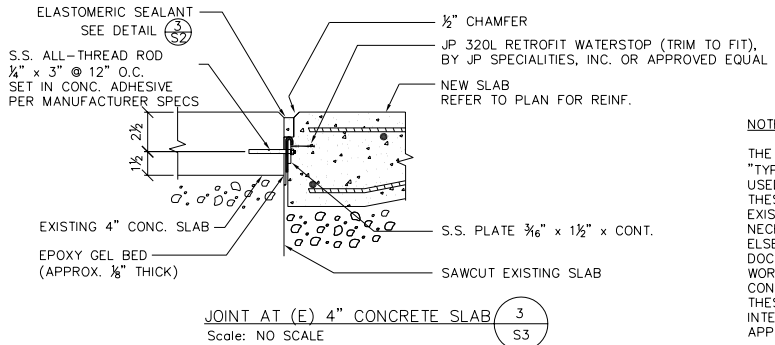
BAR SIZE	DEVELOPMENT LENGTH		SPLICE LENGTH (CLASS B)	
	l <sub>d</sub> (IN)		L (IN)	
	TOP BARS	OTHER BARS	TOP BARS	OTHER BARS
#3	18"	14"	24"	18"
#4	25"	19"	32"	25"
#5	31"	24"	40"	31"
#6	37"	28"	48"	37"
#7	54"	42"	70"	54"
#8	62"	47"	80"	62"
#9	69"	53"	90"	69"
#10	77"	59"	100"	77"
#11	85"	65"	110"	85"

- NOTES:
1. f<sub>y</sub>=60 ksi; f'<sub>c</sub>=4000 psi
  2. CLEAR SPACING BETWEEN BARS > 2D
  3. CONCRETE COVER > D
  4. TOP BAR IS DEFINED SUCH THAT MORE THAN 12 INCHES OF FRESH CONCRETE IS CAST IN THE MEMBER BELOW.
  5. FOR ALL OTHER CASES SEE UBC 1912.2.2
  6. CONFORMANCE WITH UBC 1912.2.3.1, WHERE APPLICABLE.

COMPRESSION LAP SPLICE LENGTH (COLUMNS ONLY)=30D



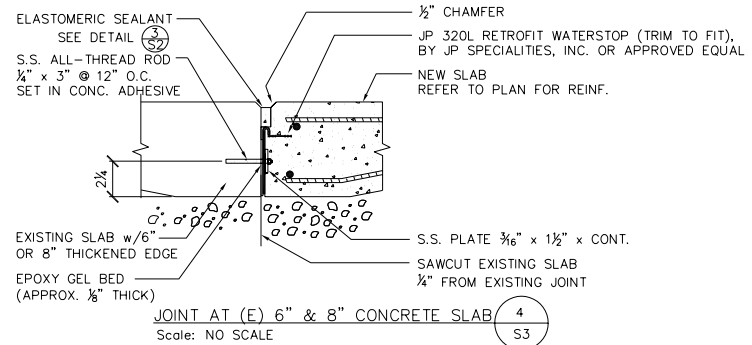
TYPICAL REINFORCING BAR DETAIL 2  
S3



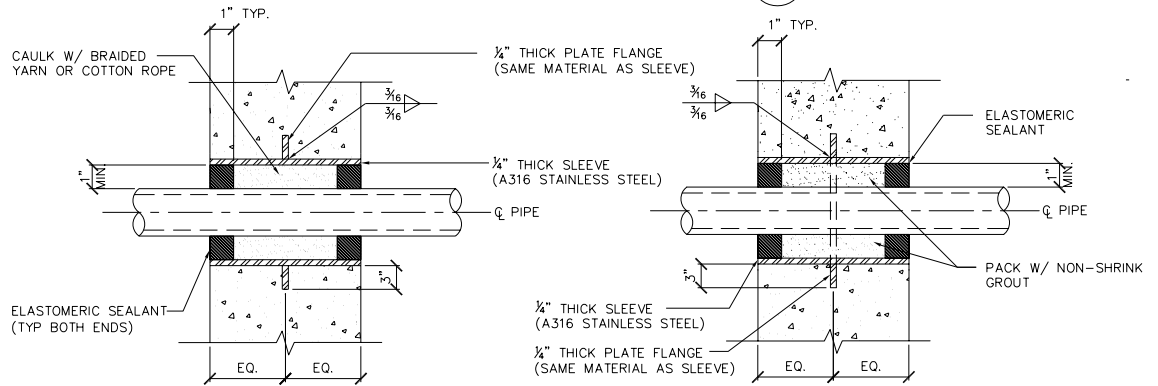
JOINT AT (E) 4" CONCRETE SLAB 3  
S3

NOTES:

THE DETAILS ON THIS SHEET ARE "TYPICAL" DETAILS WHICH ARE TO BE USED BY THE CONTRACTOR WHERE THESE VARIOUS GENERAL CONDITIONS EXIST. THESE DETAILS ARE NOT NECESSARILY REFERENCED ANYWHERE ELSE IN THIS SET OF CONSTRUCTION DOCUMENTS. PRIOR TO STARTING WORK, THE CONTRACTOR IS TO CONFIRM WITH THE ENGINEER THAT THESE DETAILS ARE PROPERLY INTERPRETED AND APPLIED TO THE APPROPRIATE CONDITIONS.



JOINT AT (E) 6" & 8" CONCRETE SLAB 4  
S3



PIPE PENETRATION THRU WALL 5  
S3

PIPE PENETRATION THRU WALL 6  
S3

0 1 2 3

MDW  
RZ

SI

STANDARD DETAILS

RZ

S3