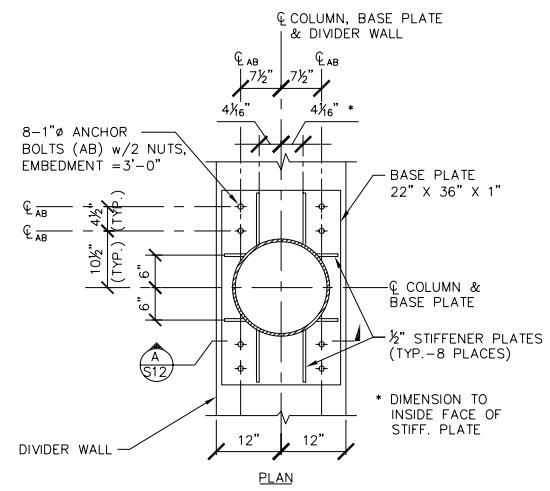


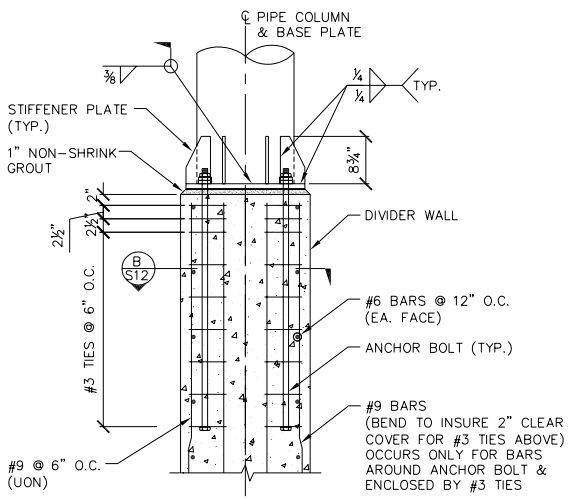
DETAIL 1 S12

- NOTES:
1. ADJUST LOCATION & SPACING OF ADJACENT PIERS ACCORDINGLY
 2. REBARS FOR PARAPET WALL & GRADE BEAM NOT SHOWN FOR CLARITY SEE SEC. A S5

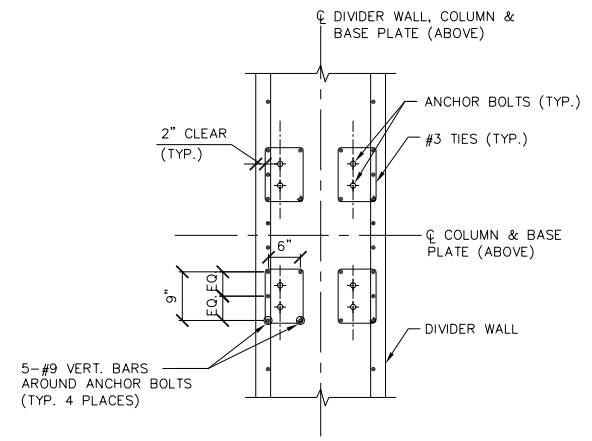


DETAIL 2 S12

- NOTES:
1. BASE PLATE & STIFFENER PLATES SHALL BE 316L STAINLESS STEEL.
 2. ANCHOR BOLTS & NUTS SHALL BE 316 STAINLESS STEEL.
 3. BOTTOM END OF PIPE COLUMN FINISH TO BEAR ON BASE PLATE.
 4. AVOID CONTACT BETWEEN ANCHOR BOLTS & REBARS.
 5. AB = ANCHOR BOLT.
 6. AVOID CHAMFER OF THE DIVIDER WALL EDGES WHERE GROUT IS PLACED BELOW BASE PLATES.



SECTION A S12



SECTION B S12

0 1 2 3 MDW SI RZ