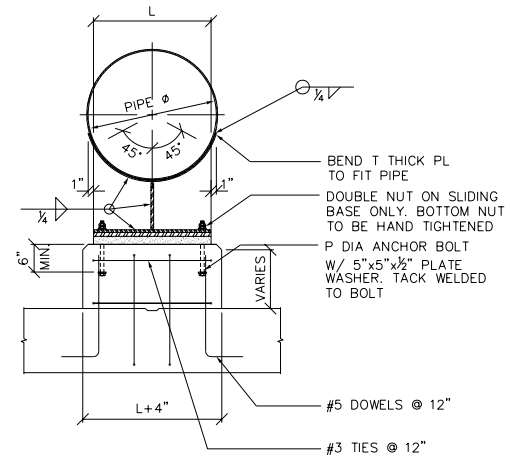


ELEVATION
STEEL PIPE SUPPORT

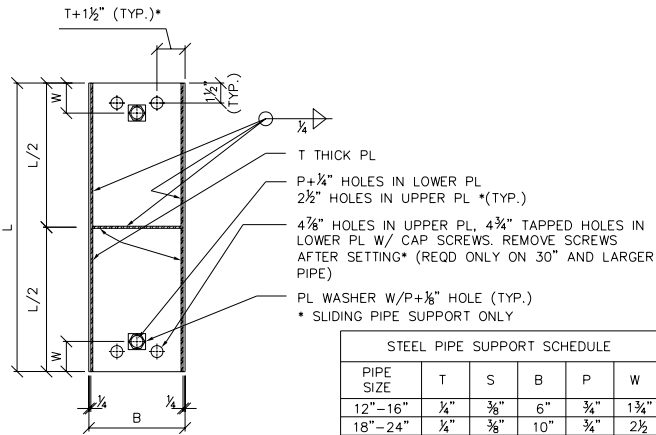
DETAIL 1
S10

CONC. FDN
(FOR CONC. LINER LOCATION
USE DETAIL 4 S10)

- NOTES:
1. 2 BASE PLATES REQUIRED FOR SLIDING PIPE SUPPORT. MACHINE MATCHING SURFACES AND LUBRICATE WITH GRAPHITE GREASE.
 2. "L" CANNOT BE LONGER THAN THE PIPE IS WIDE.

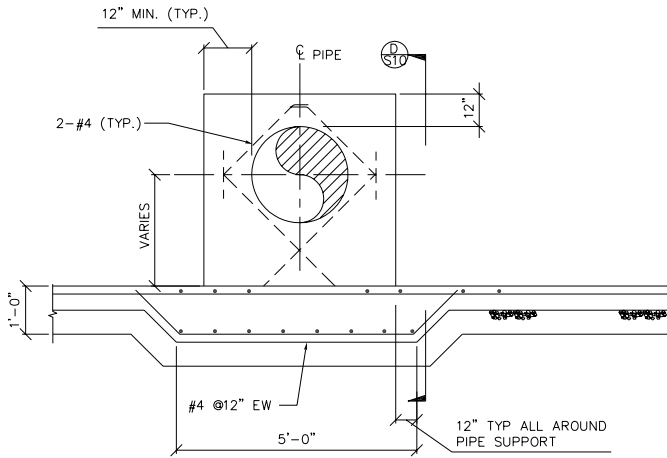


SECTION B
S10

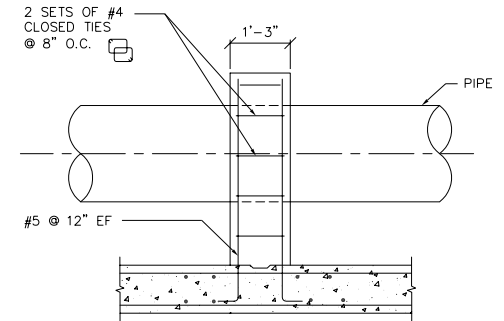


SECTION C
S10

STEEL PIPE SUPPORT SCHEDULE					
PIPE SIZE	T	S	B	P	W
12"-16"	1/4"	3/8"	6"	3/4"	1 3/4"
18"-24"	1/4"	3/8"	10"	3/4"	2 1/2"
30"-36"	3/8"	1/2"	12"	3/4"	3 1/2"
42"	7/16"	5/8"	12"	3/4"	4"
48"	1/2"	5/8"	12"	3/4"	4"
54"	5/16"	3/4"	14"	1"	4"
60"	5/8"	7/8"	15"	1"	4"
OVER 60"	3/4"	1"	18"	1"	4"



DETAIL 2
S10



SECTION D
S10

MDW
RZ

SI

RZ