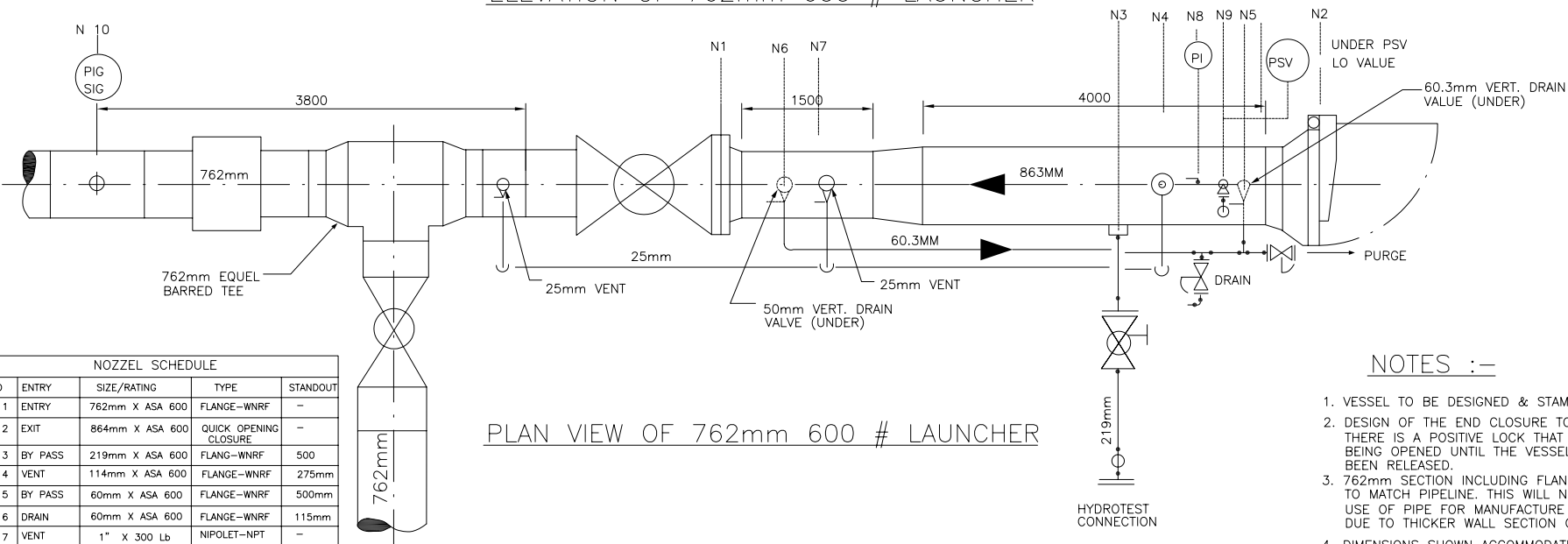


ELEVATION OF 762mm 600 # LAUNCHER



PLAN VIEW OF 762mm 600 # LAUNCHER

NOZZEL SCHEDULE				
NO	ENTRY	SIZE/RATING	TYPE	STANDOUT
N 1	ENTRY	762mm X ASA 600	FLANGE-WNRF	-
N 2	EXIT	864mm X ASA 600	QUICK OPENING CLOSURE	-
N 3	BY PASS	219mm X ASA 600	FLANG-WNRF	500
N 4	VENT	114mm X ASA 600	FLANGE-WNRF	275mm
N 5	BY PASS	60mm X ASA 600	FLANGE-WNRF	500mm
N 6	DRAIN	60mm X ASA 600	FLANGE-WNRF	115mm
N 7	VENT	1" X 300 Lb	NIPOLET-NPT	-
N 8	RESSURE GAUGE	1" X 300 Lb	NIPOLET-NPT	-
N 9	RELIEF VALVE	1" X 300 Lb	NIPOLET-NPT	-
N 10	PIG ALERT	REFER TO SPECIFICATION		-

NOTES :-

1. VESSEL TO BE DESIGNED & STAMPED TO ASME VIII.
2. DESIGN OF THE END CLOSURE TO BE SUCH THAT THERE IS A POSITIVE LOCK THAT PREVENTS IT BEING OPENED UNTIL THE VESSEL PRESSURE HAS BEEN RELEASED.
3. 762mm SECTION INCLUDING FLANGE TO HAVE AN I.D. TO MATCH PIPELINE. THIS WILL NORMALLY PRECLUDE USE OF PIPE FOR MANUFACTURE OF THIS SECTION DUE TO THICKER WALL SECTION OF VESSEL
4. DIMENSIONS SHOWN ACCOMMODATE BOTH LINALOG & BRITISH GAS INSPECTION TOOLS.
5. TRAP TO BE FITTED WITH GANTRY AND FRAME FOR LOADING/REMOVAL OF PIGS FROM TRAP.

A3

Scale:	N.T.S.
Drawn:	
Date:	
Checked:	
Date:	
Approved:	
Date:	

762mm LAUNCHER TRAP